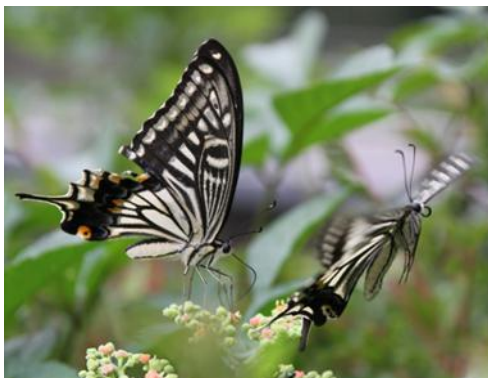


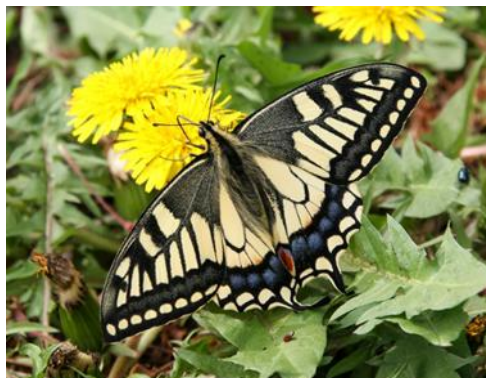
● Blackish butterflies



● Namiageha (Papilio xuthus)

- Season : April~October
- Size : 53~60mm
- Food : Citrus Family (Rutaceae)

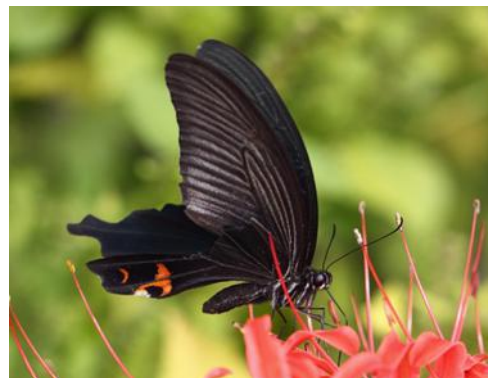
Commonly seen swallowtail butterfly. Joint of the fore wing is black linear.



● Kiageha (Papilio machaon)

- Season : April~October
- Size : 40~65mm
- Food : Citrus Family (Rutaceae)

Can be seen from the flatland to the mountainous area. Joint of the fore wing is filled black.



● Kuroageha (Papilio protenor)

- Season : April~October
- Size : 50~70mm
- Food : Citrus Family (Rutaceae)

Has black wings. Comes to Azelia, Red spider lily, Harlequin glorybower, etc.



● Nagasakiageha (Papilio memnon)

- Season : April~October
- Size : 60~70mm
- Food : Citrus Family (Rutaceae)

Doesn't have tale on the hind wings, and easy to identify from other swallowtail butterfly.



● Monkiageha (Papilio helenus)

- Season : May~September
- Size : 50~80mm
- Food : Citrus Family (Rutaceae)

Has white spot on the hind wings. Seen in south from Kanto.



● Karasuageha (Papilio bianor)

- Season : April~September
- Size : 45~70mm
- Food : Citrus Family (Rutaceae)

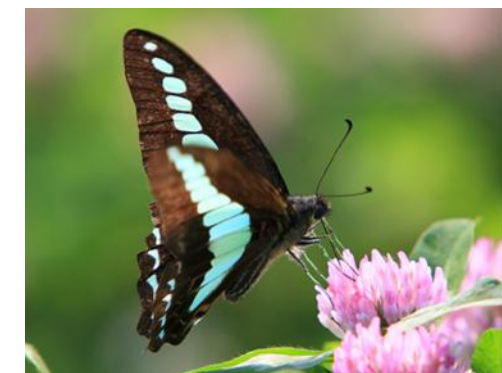
Has beautiful blue wings shines in a light.



● Jakoageha (Byasa alcinous)

- Season : April~September
- Size : 50~60mm
- Food : Birthworts Family (Aristolochiaceae)

The red body alerts the predators that they have poison. Male's wings are black.



● Aosujiageha (Graphium sarpedon)

- Season : April~October
- Size : 45~55mm
- Food : Laurel Family (Lauraceae)

Flies quickly over tall trees, and difficult to catch.

● Blackish butterflies



● Ruritateha (*Kaniska canace*)

- Season : March~November
- Size : 30~40mm
- Food : Lily Family (Liliaceae)

Hibernates in adult stage. It gather in sap such as Kunugi or Konara.

● Gomadaracho (*Hestina persimilis japonica*)

- Season : May~August
- Size : 35~42mm
- Food : Chinese Hackberry (*Celtis sinensis*)

Can be seen in the parks with Chinese Hackberry. It flies like a glider.

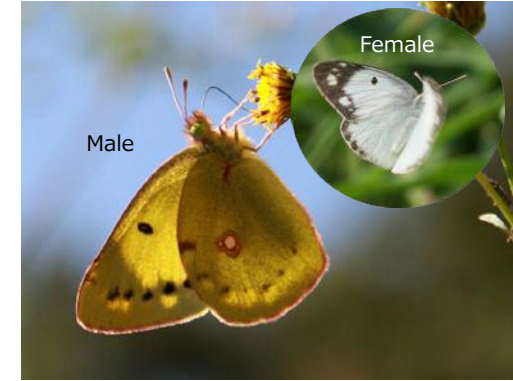


● Akaboshigomadara (*Hestina assimilis*)

- Season : May~September
- Size : 35~42mm
- Food : Chinese Hackberry (*Celtis sinensis*)

Invasive species brought in by humans. Spring form has no red spot.

● Yellow butterflies



● Monkicho (*Colias erate*)

- Season : February~November
- Size : 25~30mm
- Food : Pea Family (Leguminosae)

Appears from early spring. Male is yellow and female is white.

○ White butterflies



● Kitakicho (*Eurema mandarina*)

- Season : March~November
- Size : 20~25mm
- Food : Pea Family (Leguminosae)

Hibernates in adult stage. There are small black dots on the yellow wings.



○ Monshirocho (*Pieris rapae*)

- Season : March~November
- Size : 25~30mm
- Food : Brassica Family (Brassicaceae)

Often found in cabbage field. Larva is green caterpillar.



○ Sujiguroshirocho (*Pieris melete*)

- Season : April~October
- Size : 25~35mm
- Food : Brassica Family (Brassicaceae)

Similar to the Monshirocho, but the vein of the wings are black. Can be seen around the forest.



○ Tsumakicho (*Colias erate*)

- Season : March~May
- Size : 25mm
- Food : Brassica Family (Brassicaceae)

Hibernates in pupal stage. Tip of the male's wings are yellow.